

Volta Bassa Series



A true country style oven

An economical and simple oven inspired by authentic vintage ovens.

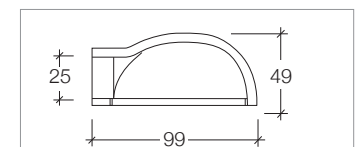
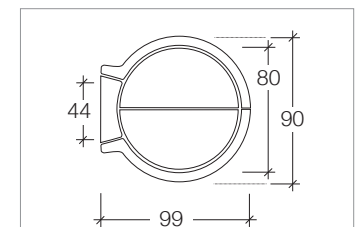
Optional

	Vent Junction - 20 cm diameter (base cm 46 x 27,5) - Weight Kg 9
	Vent Junction - 25 cm diameter (base cm 46 x 32,5)- Weight Kg 11
	Vent Junction - 30 cm diameter (base cm 50 x 40 - Weight Kg 16
	Base for V.B. oven 80 e 93
	Base for Volta Bassa oven

Volta Bassa 80



Internal diameter	ø cm 80
Width	cm 90
Depth	cm 99
Weight	Kg 180
Pizza Capacity	3
Bread Capacity	Kg 6

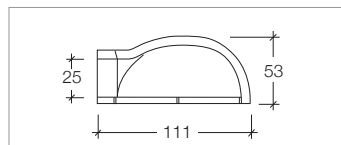
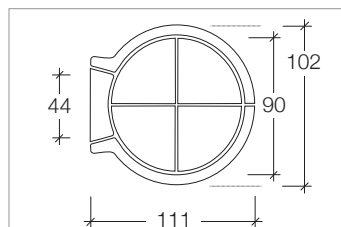


Professional Ovens

Volta Bassa 93



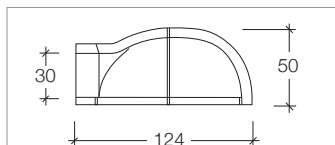
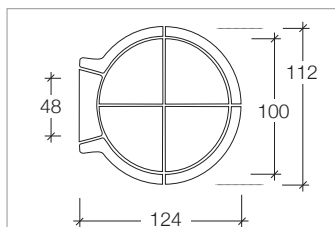
Internal diameter	ø cm 90
Width	cm 102
Depth	cm 111
Weight	Kg 210
Pizza Capacity	4
Bread Capacity	Kg 8



Volta Bassa 101



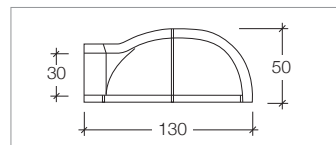
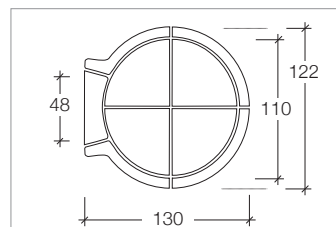
Internal diameter	ø cm 100
Width	cm 112
Depth	cm 124
Weight	Kg 270
Pizza Capacity	5
Bread Capacity	Kg 10



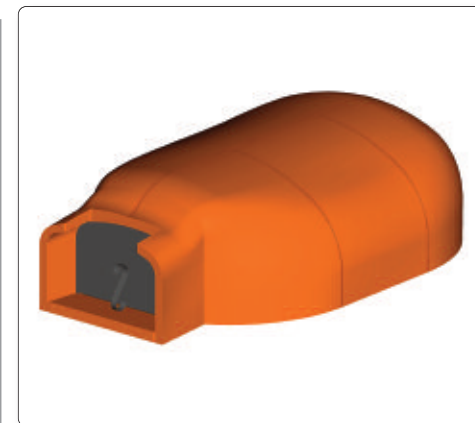
Volta Bassa 110



Internal diameter	ø cm 110
Width	cm 130
Depth	cm 130
Weight	Kg 330
Pizza Capacity	6
Bread Capacity	Kg 12



Volta Bassa 160x110



Superficie interna	cm 160x110
Width	cm 122
Depth	cm 180
Weight	Kg 480
Pizza Capacity	8
Bread Capacity	Kg 18

