

# Grand Chef Series



## *Our largest oven for home chefs*

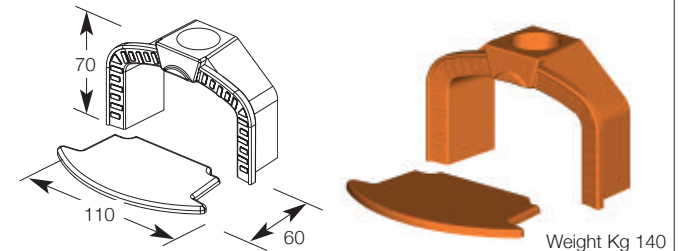
A great oven for baking and hospitality. The cooking platform is deep and spacious, and the hinged oven door is easy to use.

The thermometer is positioned along the frame of the oven.

The simple and easy eyehole allows for better control of cooking times.

### *Optional*

Grand Chef Arch  
with chimney flue diam. cm 25  
complete with rounded front arch

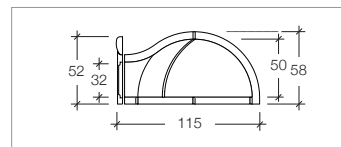
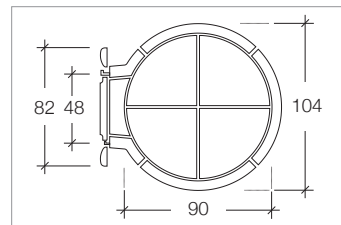


# Professional Ovens

## Grand Chef 92



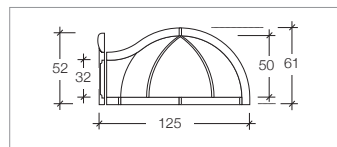
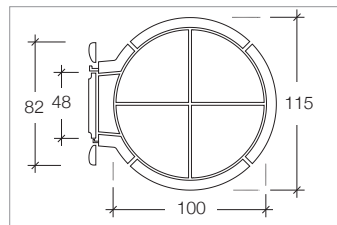
Internal diameter	ø cm 90
Width	cm 104
Depth	cm 115
Weight	Kg 280
Pizza Capacity	4
Bread Capacity	Kg 8



## Grand Chef 100



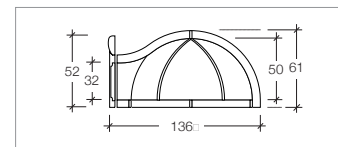
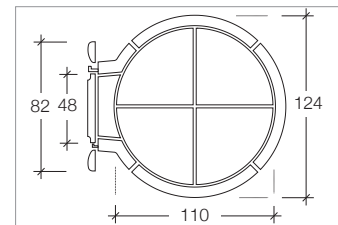
Internal diameter	ø cm 100
Width	cm 115
Depth	cm 125
Weight	Kg 335
Pizza Capacity	5
Bread Capacity	Kg 10



## Grand Chef 112



Internal diameter	ø cm 110
Width	cm 124
Depth	cm 136
Weight	Kg 390
Pizza Capacity	6
Bread Capacity	Kg 12



## Grand Chef 125



Internal diameter	ø cm 120
Width	cm 135
Depth	cm 146
Weight	Kg 435
Pizza Capacity	7
Bread Capacity	Kg 14

